

# ARIANNA LAVABO A5N60BI

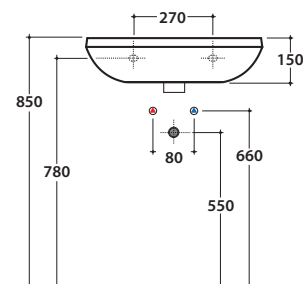
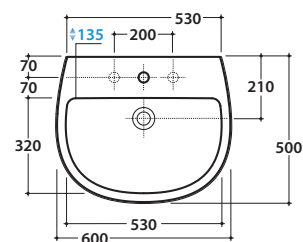
CE EN 14688:2015

# GLOBO



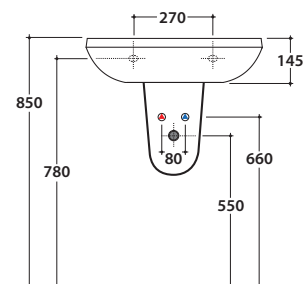
Cod. **A5N60BI**

Lavabo 60.50 h15 cm. Installazione sospesa, su colonna a terra o sospesa. Peso 17 kg  
*Basin 60.50 h15 cm. Wall-hung installation or on floor mounted / wall-hung pedestal. Weight 17 kg.*



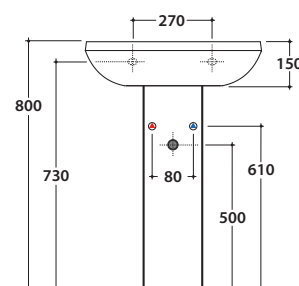
Cod. **A5S05BI**

Colonna sospesa. Peso 9 kg  
*Wall-hung pedestal. Weight 9 kg*



Cod. **LE005BI**

Colonna a terra. Peso 15 kg  
*Floor-mounted pedestal. Weight 15 kg*



Cod. **FI012BI**

Piletta up and down con tappo in ceramica per lavabi con troppo pieno. Peso 0,5 Kg  
*Push open valve drain with ceramic top for basins with overflow. Weight 0,5 Kg*



Cod. **FI012CR**

Piletta cromata up and down per lavabi con troppopieno. Peso 0,5 Kg  
*Push open chromed valve drain for basins with overflow. Weight 0,5 Kg*